

# CelloSeal

a cellofoam® product polyethylene sill sealer

*Stops air leakage between foundation wall and sill plate to help ensure maximum energy efficiency.*

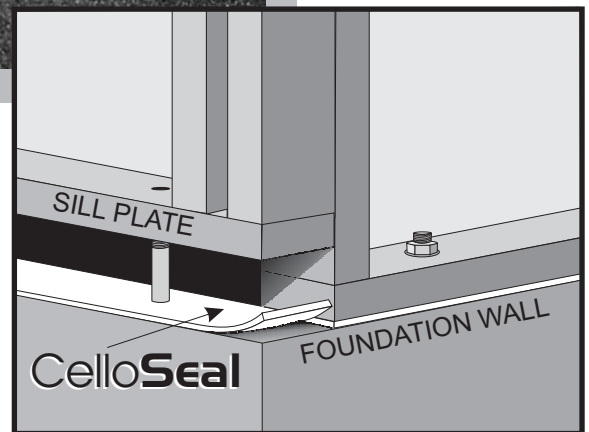
**Available in  
3 1/2" x 1/4" and  
5 1/2" x 1/4" 50ft. Rolls**

CelloSeal is made of tough polyethylene foam. This material has a proven ability to resist the harmful effects of freeze/thaw cycles ensuring a highly effective seal year after year.

## Easy Installation

1. Sweep foundation clean and remove all high points greater than 1/4".
2. Roll out CelloSeal the length of the foundation wall, keeping it flush with the wall face.

3. Butt all joints tightly without overlapping.
4. After impaling CelloSeal over anchor bolt, set seal plate on top of CelloSeal & foundation and anchor securely.



cellofoam®